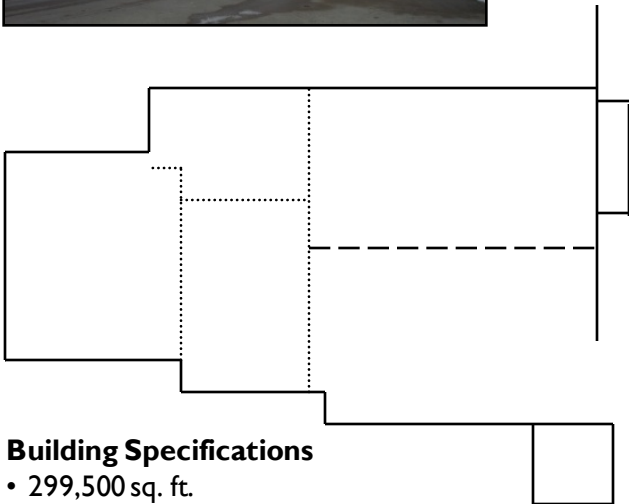


# Retrofit Case Study

Cambridge Space Heaters vs.  
Steam Boiler



## Building Specifications

- 299,500 sq. ft.
- R-4.3- Roof
- R-4.3 - Walls
- R-2.7 - Walls

## Summary

The Cambridge system used **46% less** gas.

The Cambridge system saved approximately **\$57,000/year** in gas cost operating at \$0.22/ft<sup>2</sup> vs. \$0.41/ft<sup>2</sup>.

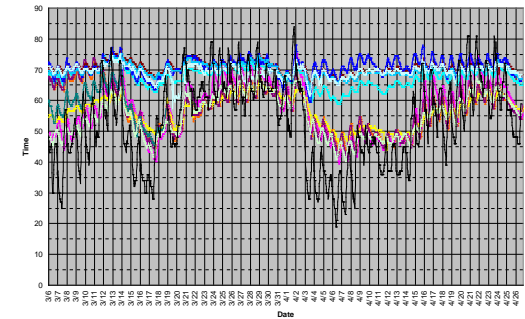
## Before – Steam Boiler

- |                        |                    |
|------------------------|--------------------|
| <b>Existing System</b> | <b>Performance</b> |
| • 500 hp boiler        | • No zone control  |
|                        | • No fresh air     |

## Operating Costs

Based on:  
113,790 therms for 2005-06 heating season  
Normalized to 30 year averages

**\$0.41/ft<sup>2</sup> Gas cost @ \$1.00/therm**



Average Indoor Temp – 58°

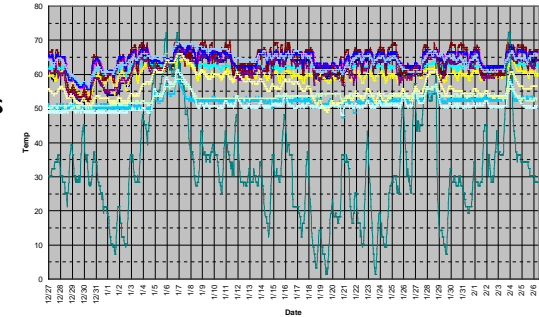
## After - Cambridge Space Heaters

- |  |                      |
|--|----------------------|
| <b>New System</b>                          | <b>Performance</b>   |
| • Various Cambridge S-Series Space Heaters | • Zone Control       |
|  | • Even temperatures  |
|  | • Better Air Quality |

## Operating Costs

Based on:  
65,370 therms for 2006-07 heating season  
Normalized to 30 year averages

**\$0.22/ft<sup>2</sup> Gas cost @ \$1.00/therm**



Average Indoor Temp – 59°



760 Long Road Crossing Dr. • Chesterfield MO 63005  
800-899-1989 • www.cambridge-eng.com